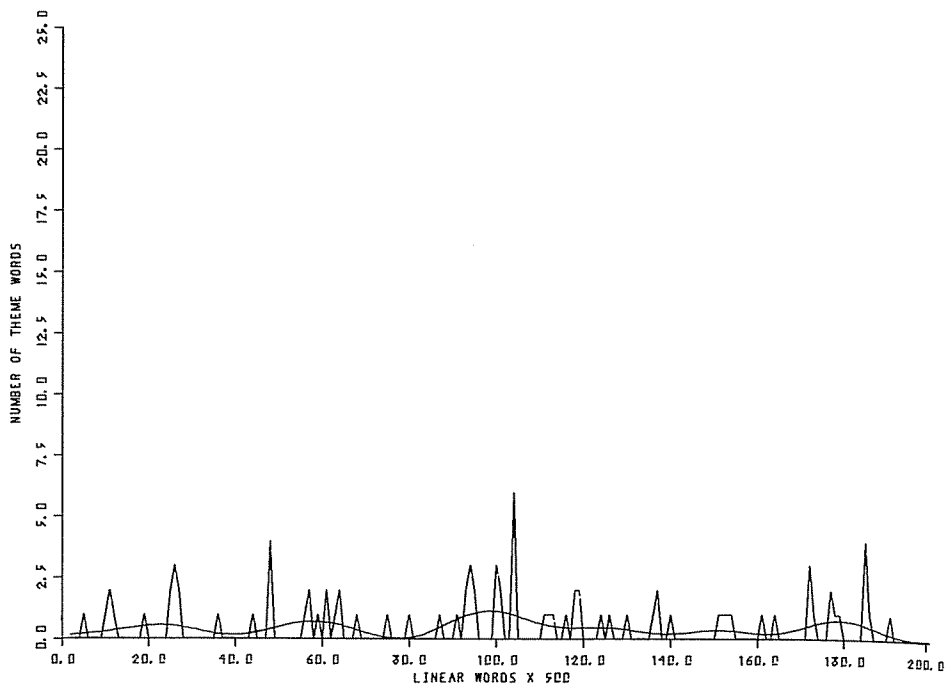


Appendix E

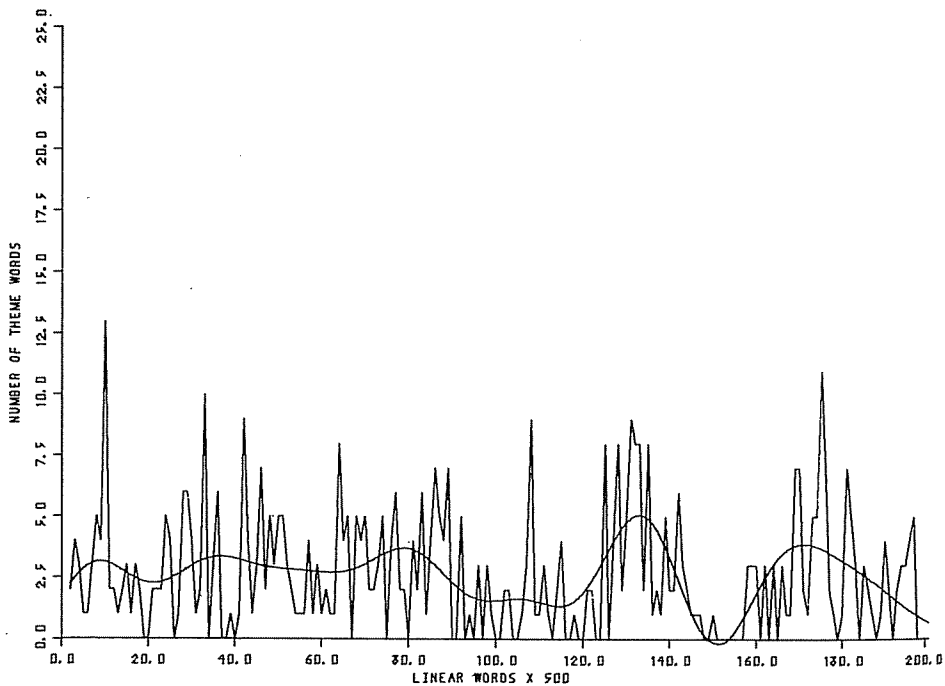
Smoothed Distributions of Thematic Groups of Images

THEMATIC GROUPS

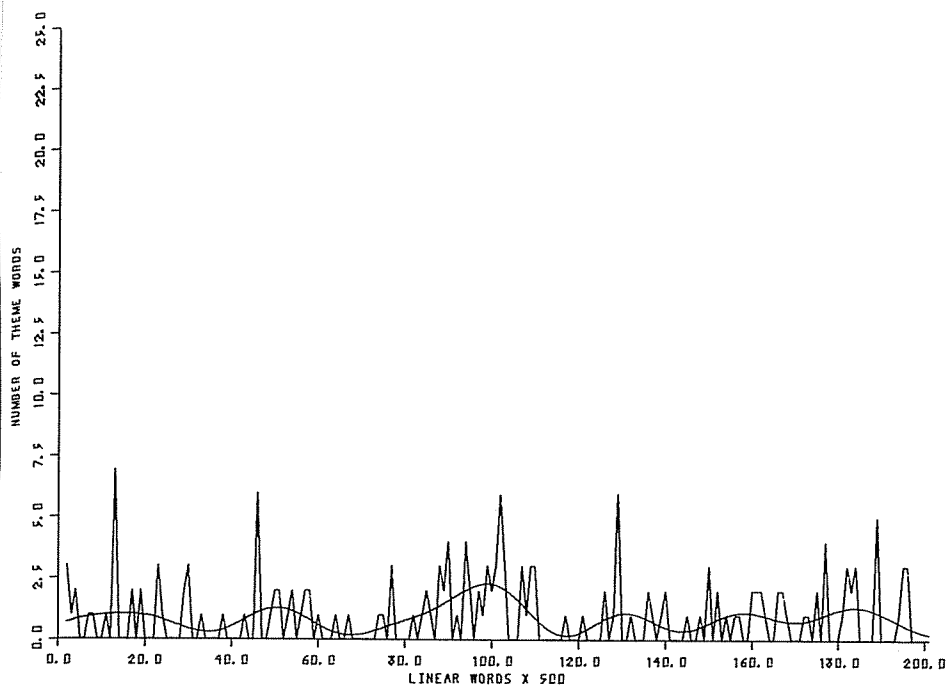
- | | |
|--------------------------------|------------------------|
| 1. Agression | 15. Fire/heat |
| 2. Air/sky | 16. Food/taste |
| 3. Animals | 17. Human reference |
| 4. Art | 18. Language |
| 5. Auditory | 19. Light/dark |
| 6. Bird | 20. Objects (physical) |
| 7. Body | 21. Places (physical) |
| 8. Buildings | 22. Plants |
| 9. Clothes | 23. Religion |
| 10. Colors | 24. Sight (quality) |
| 11. Death | 25. Smell |
| 12. Emotions (other than fear) | 26. Tactile |
| 13. Excrement | 27. Water/cold |
| 14. Fear | |



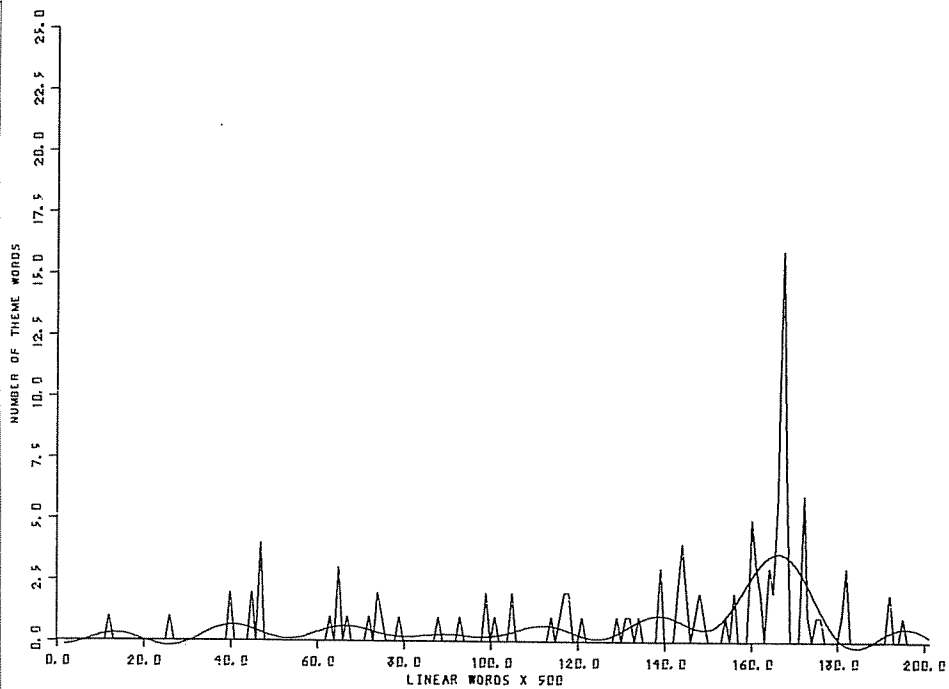
AGGRESSION



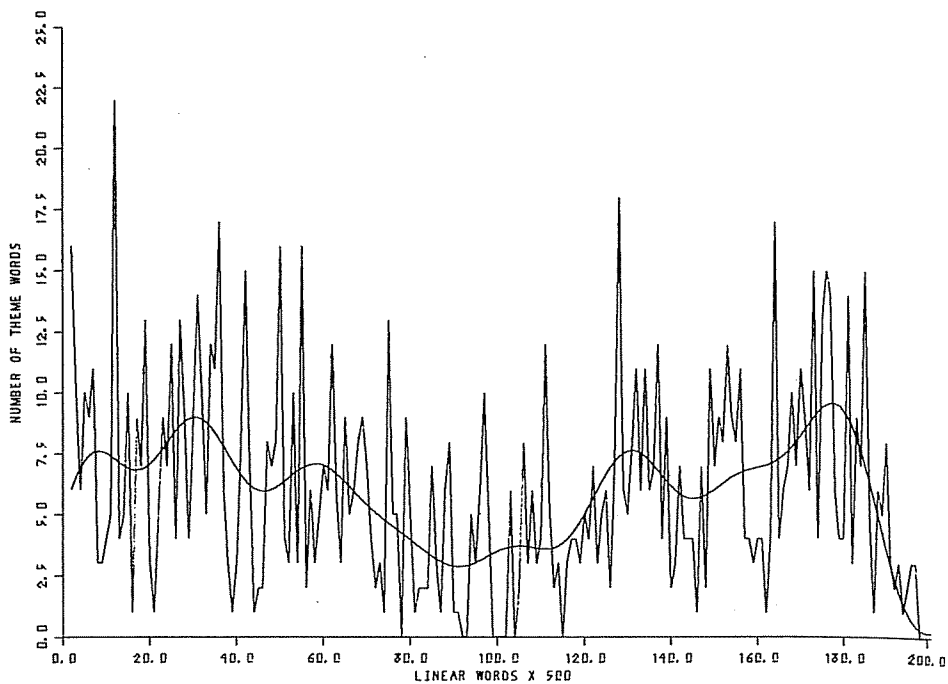
AIR/SKY



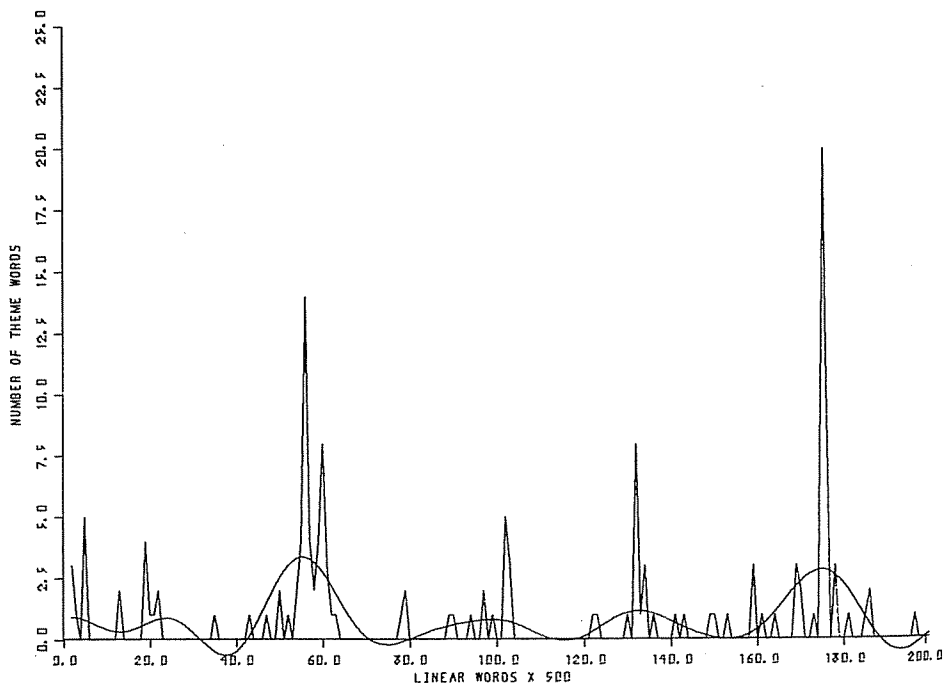
ANIMALS



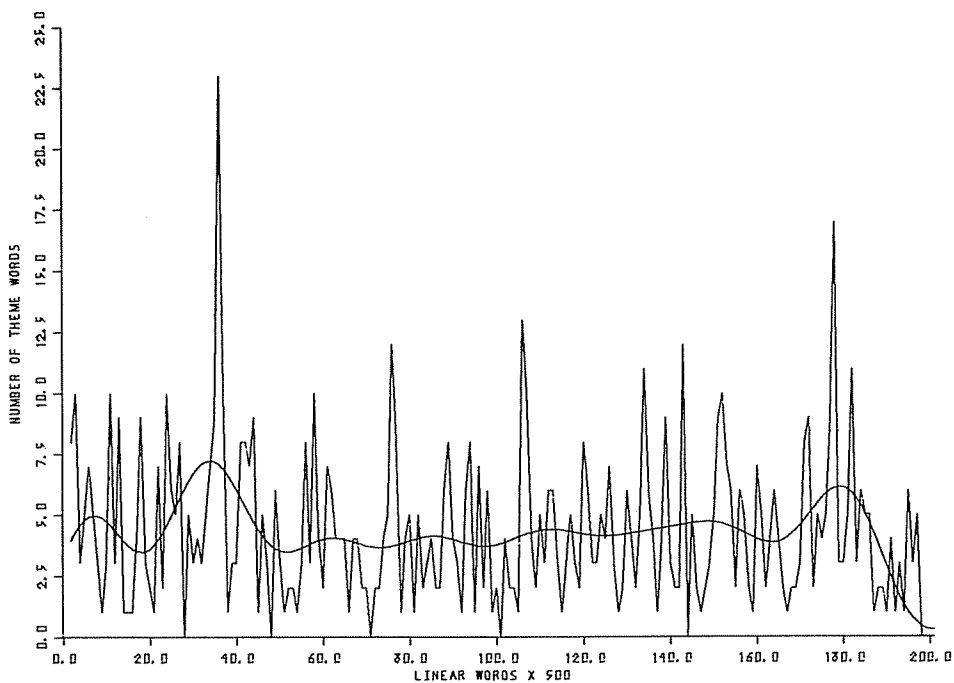
ART



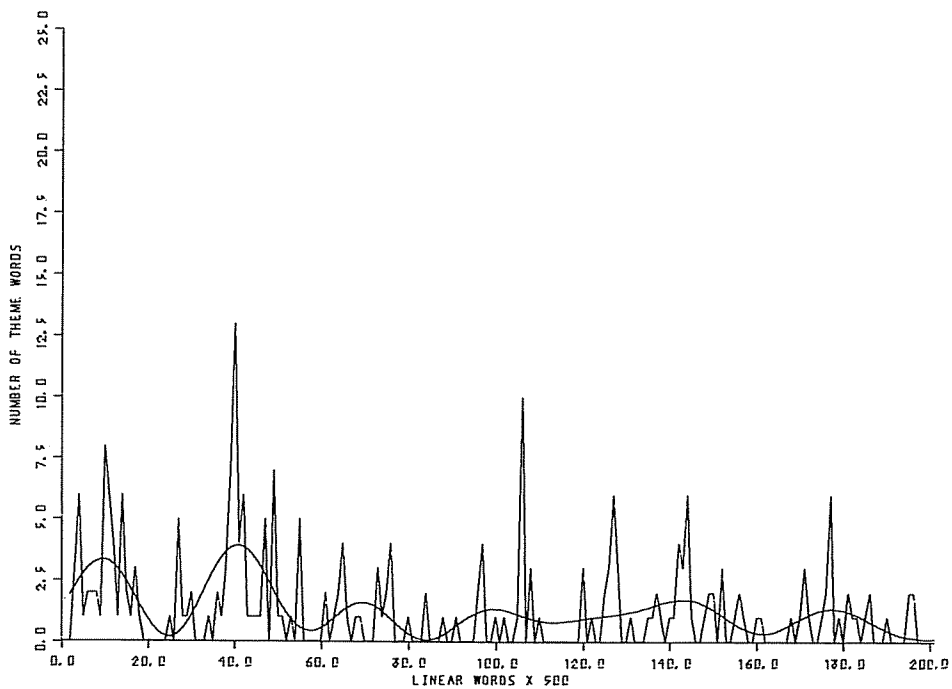
AUDITORY



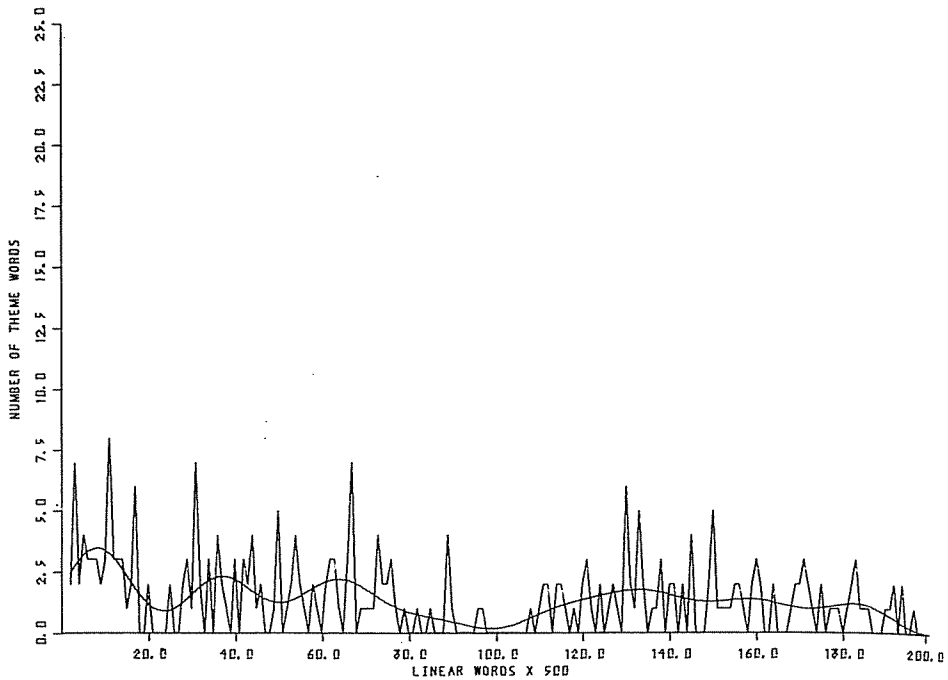
BIRD



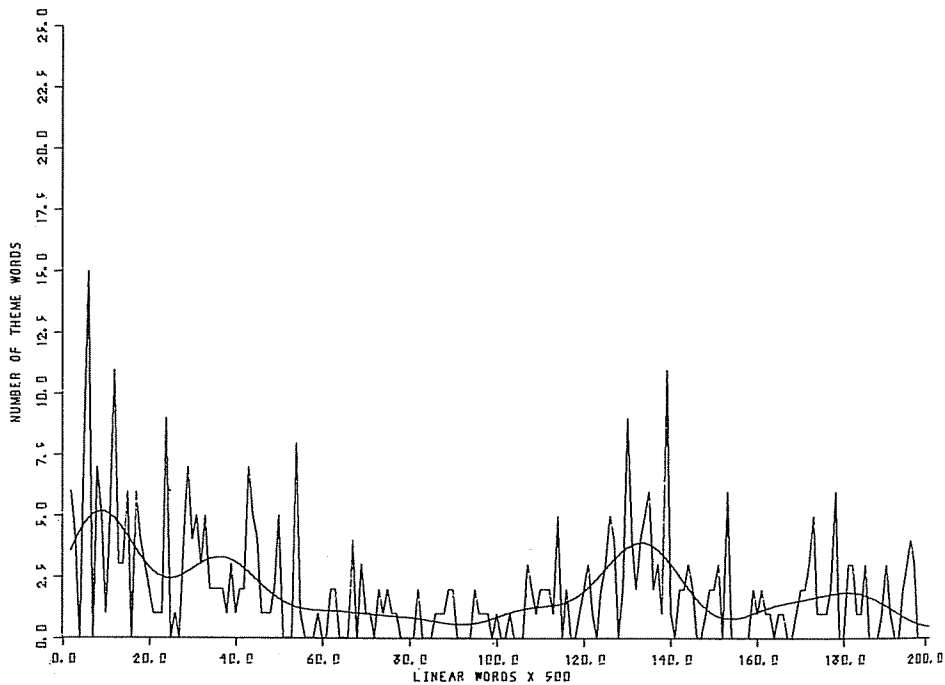
PARTS OF THE BODY



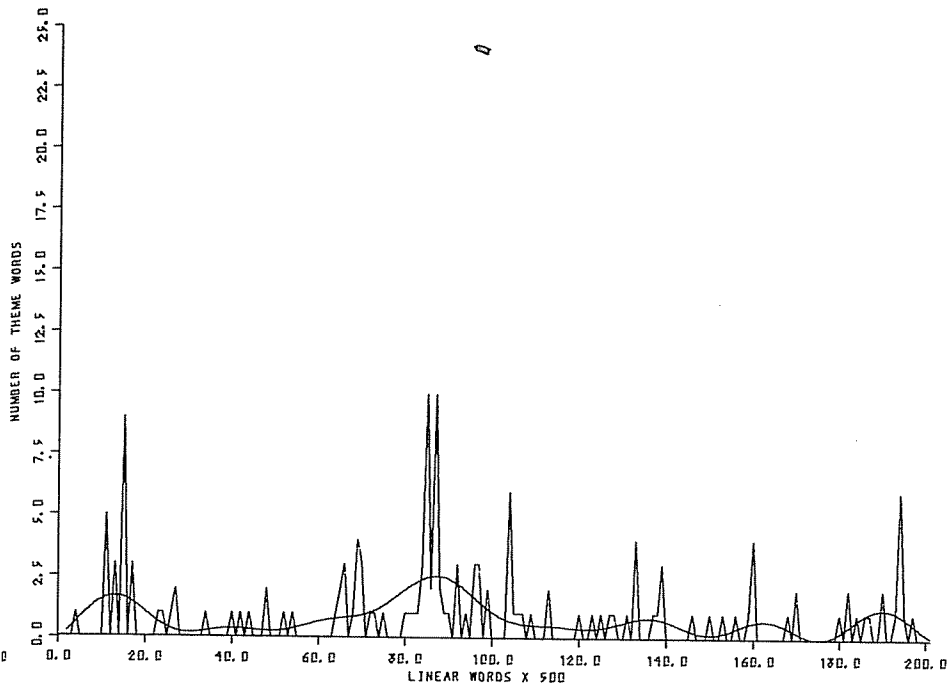
BUILDING



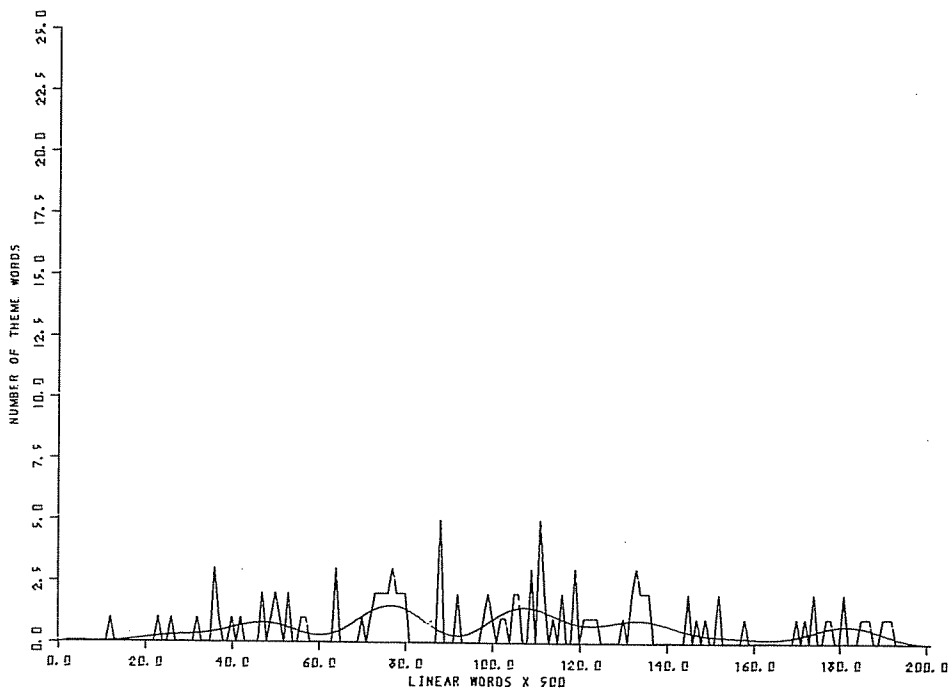
CLOTHES



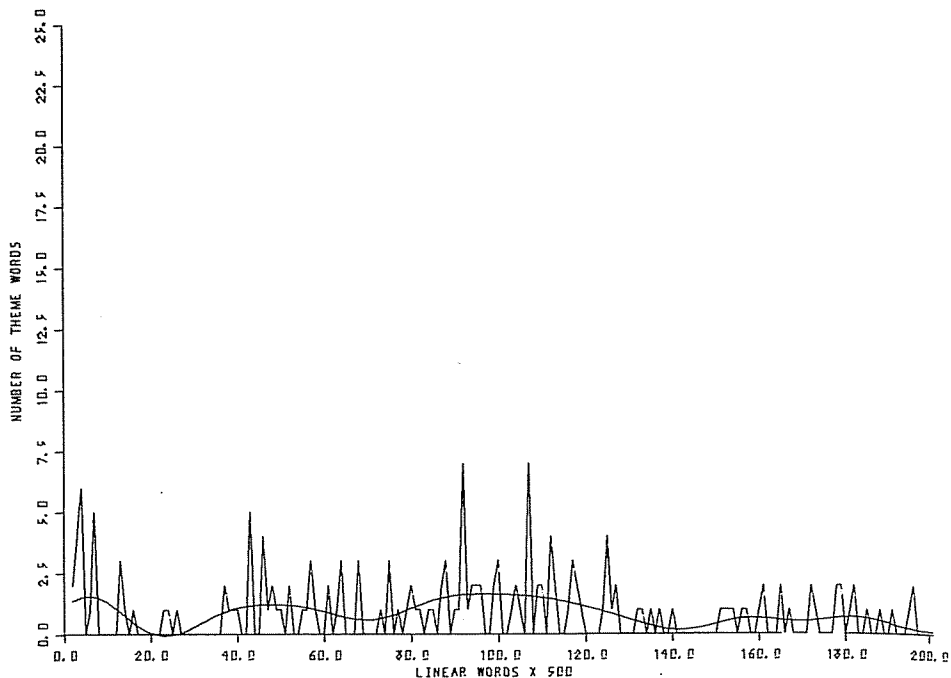
COLOR



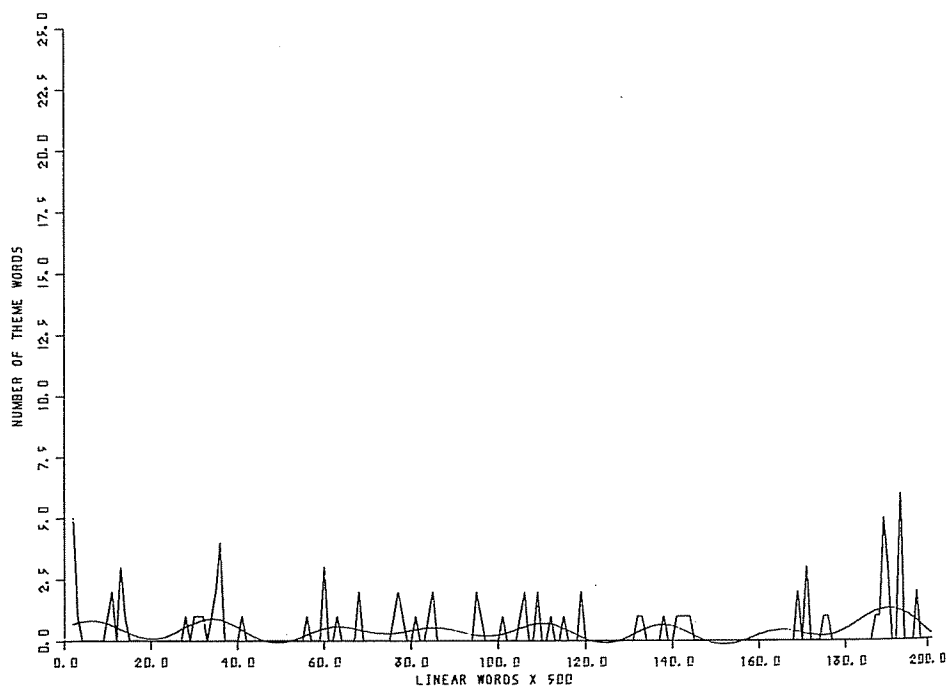
DEATH



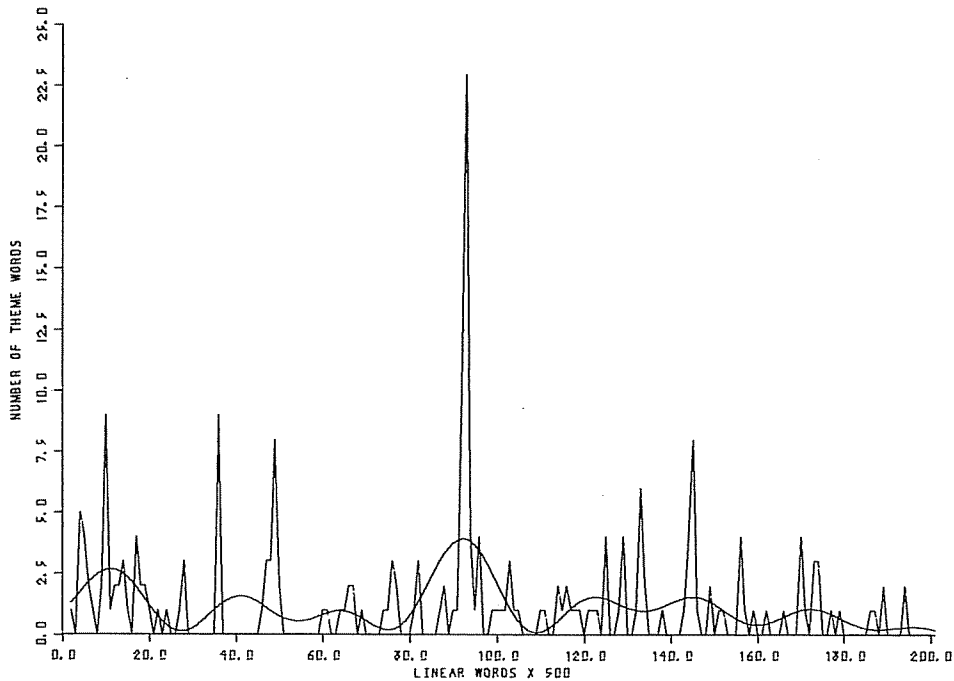
EMOTIONS OTHER THAN FEAR



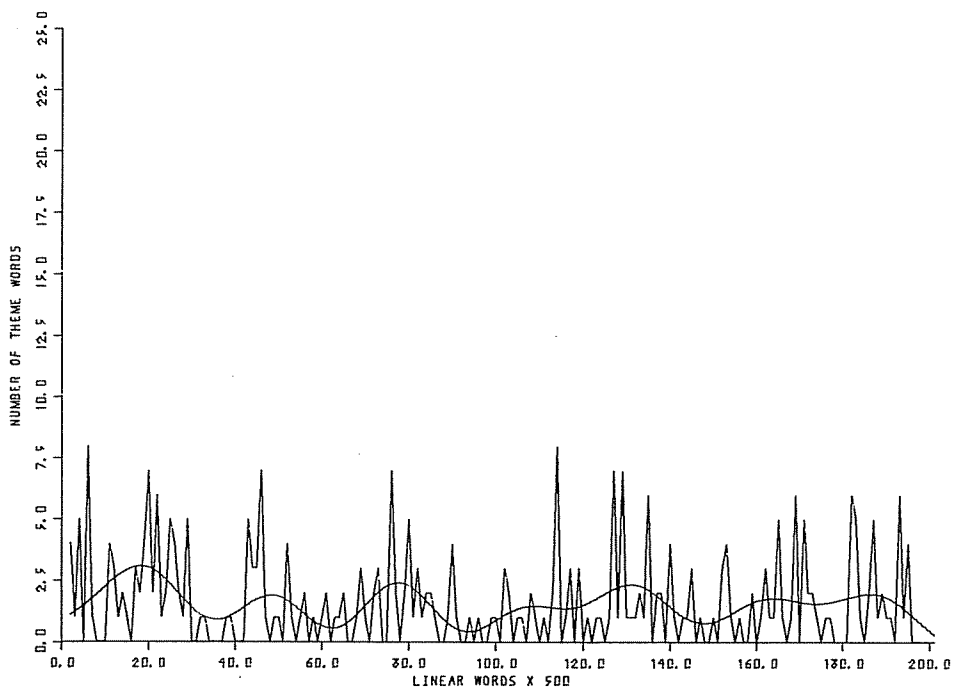
EXCREMENT/FILTH



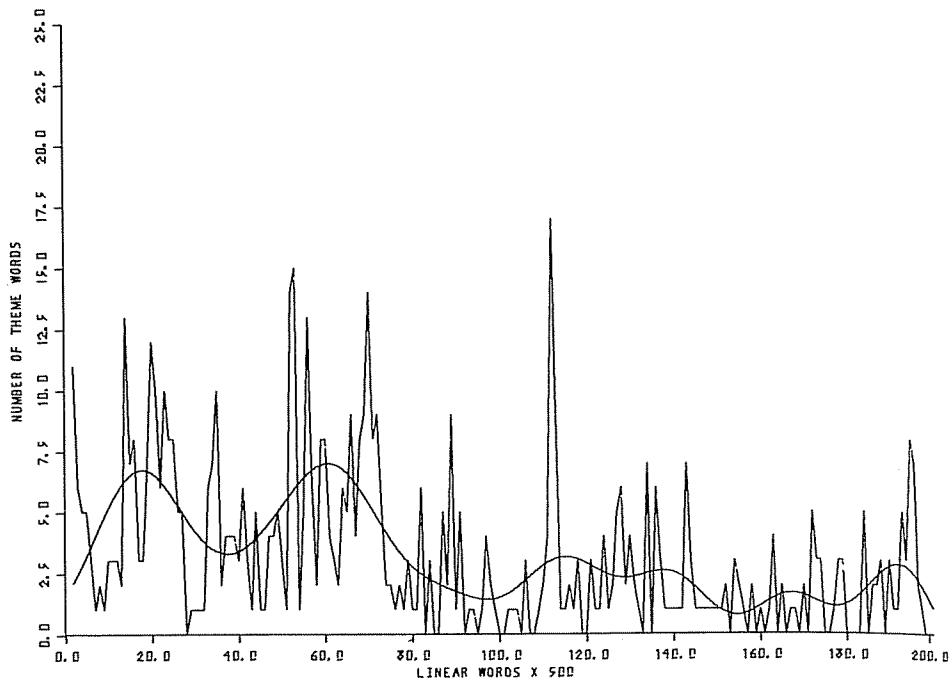
FEAR



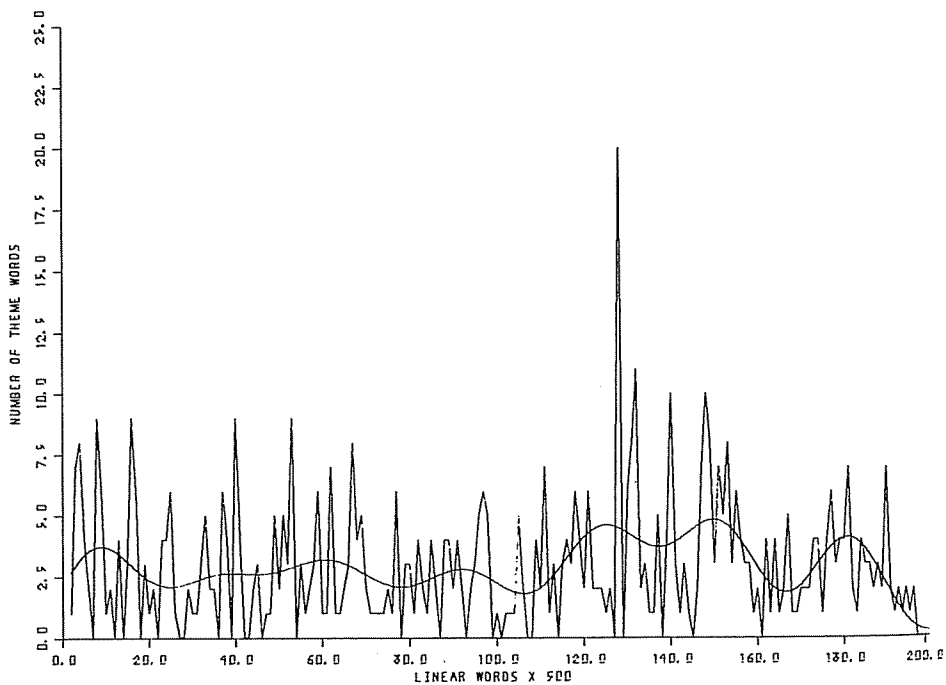
FIRE/HEAT



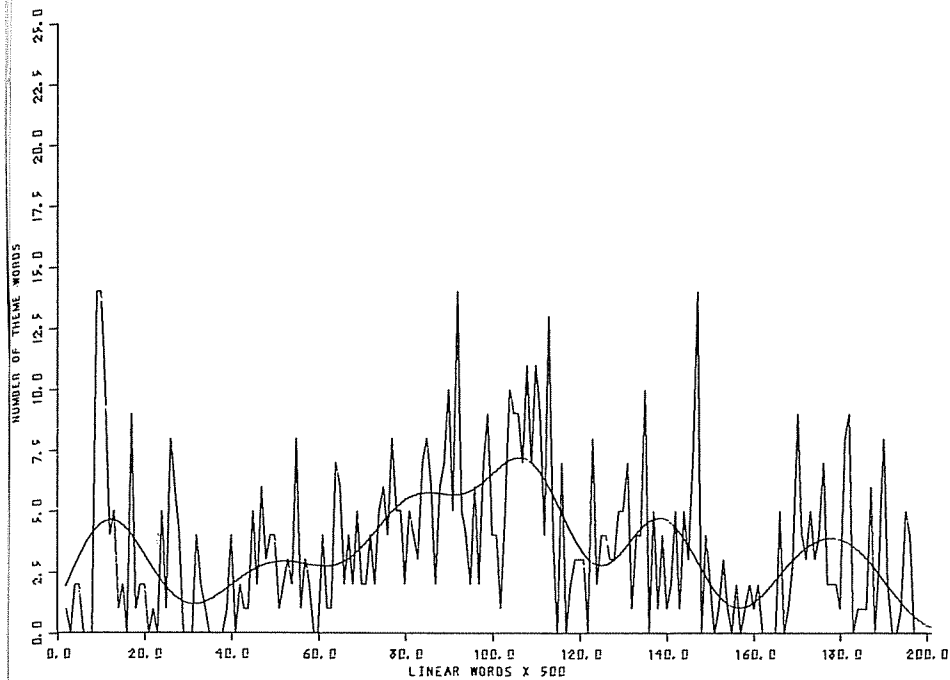
TASTE/FOOD



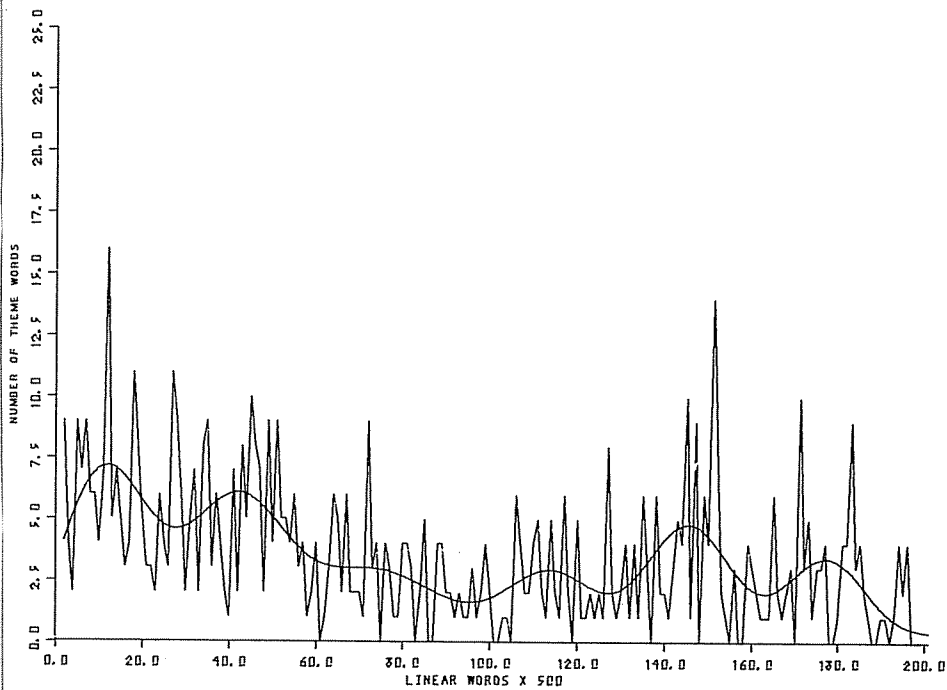
HUMAN REFERENCE



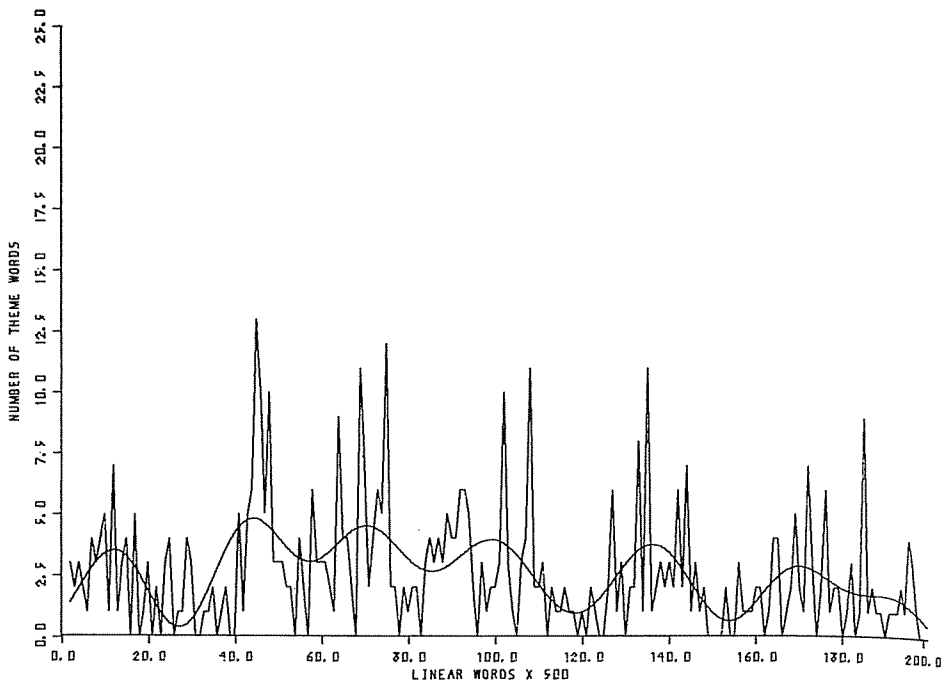
LANGUAGE



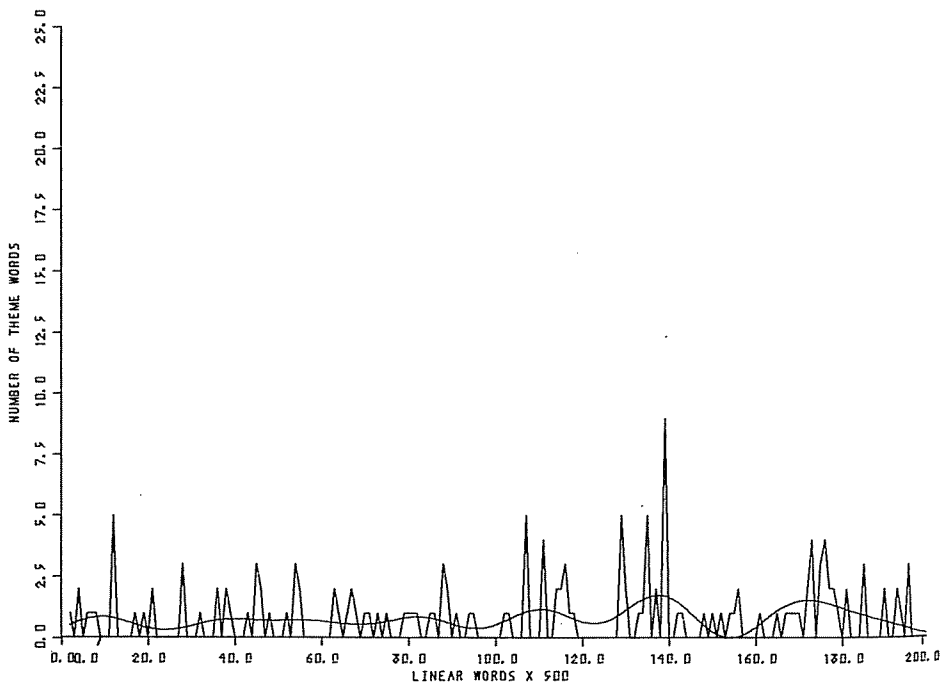
LIGHT/DARK



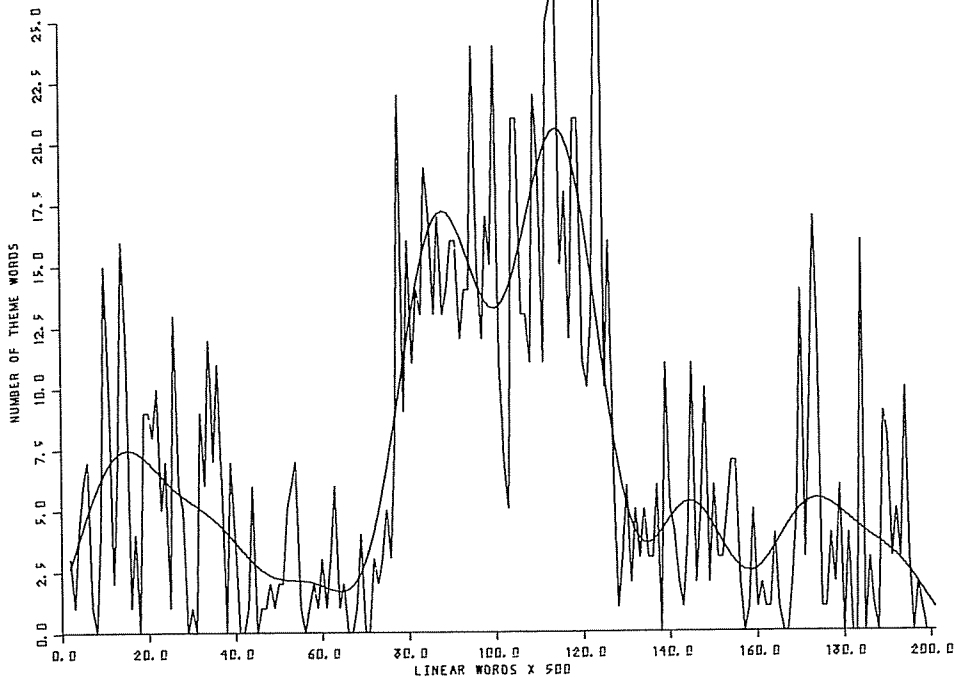
PHYSICAL OBJECTS



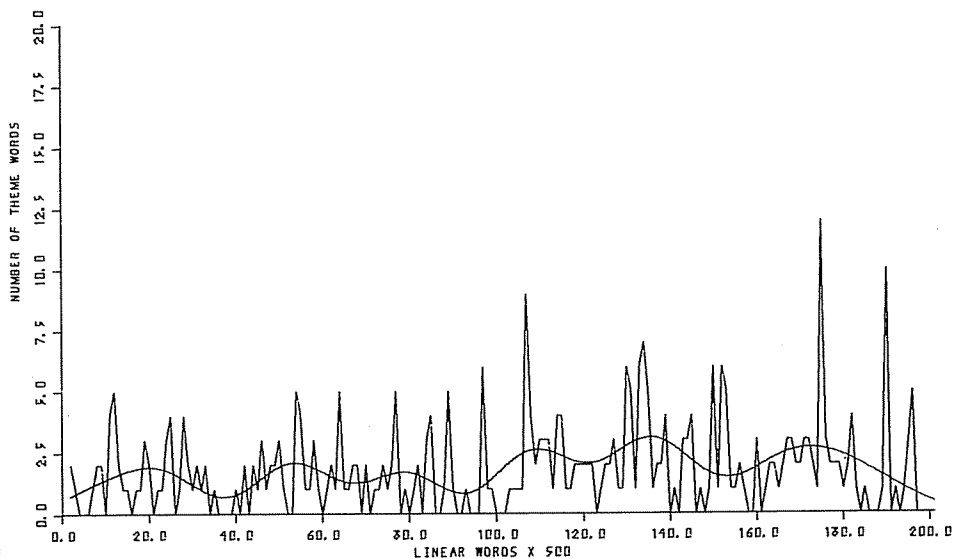
PHYSICAL PLACE



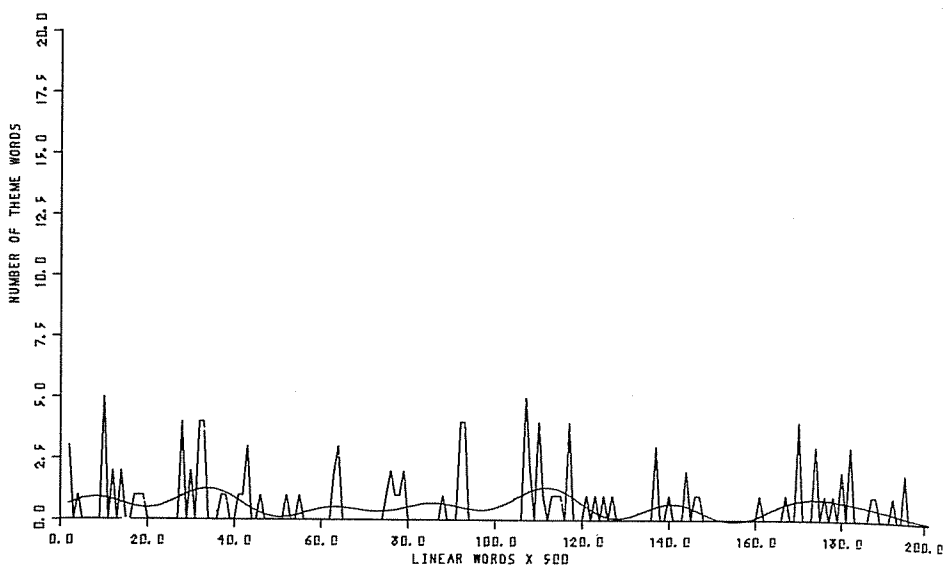
PLANTS



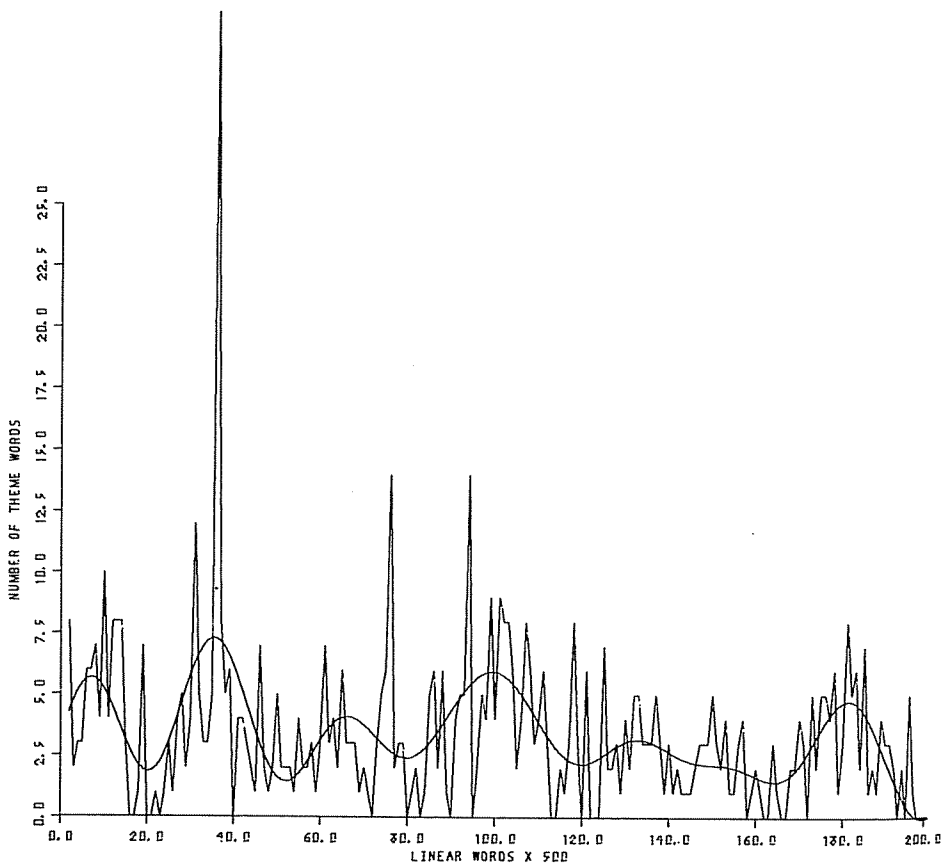
RELIGION



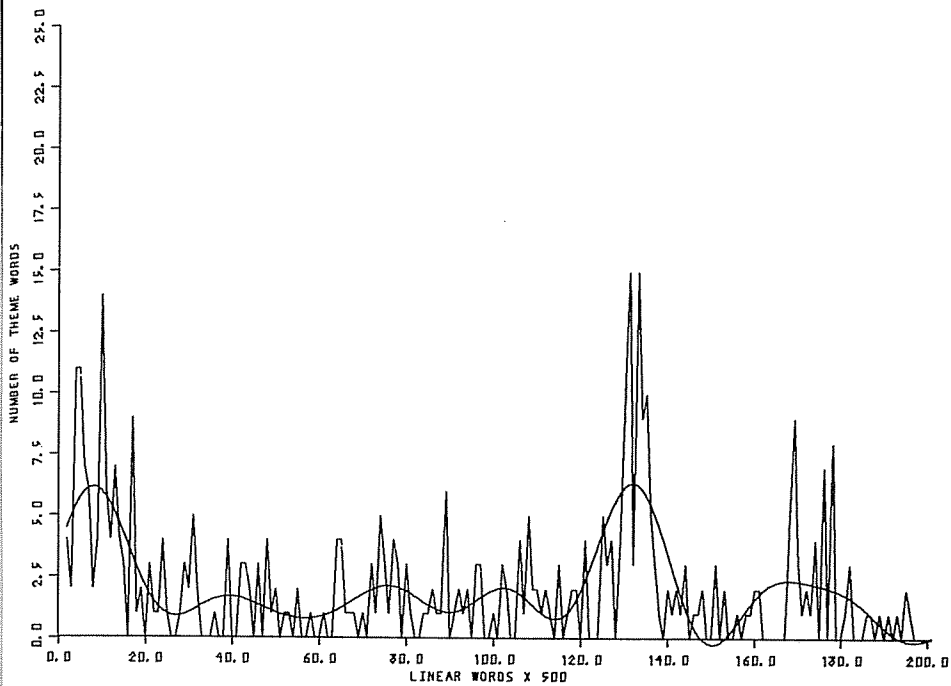
QUALITY OF SIGHT



SMELL



TACTILE



WATER/COLD