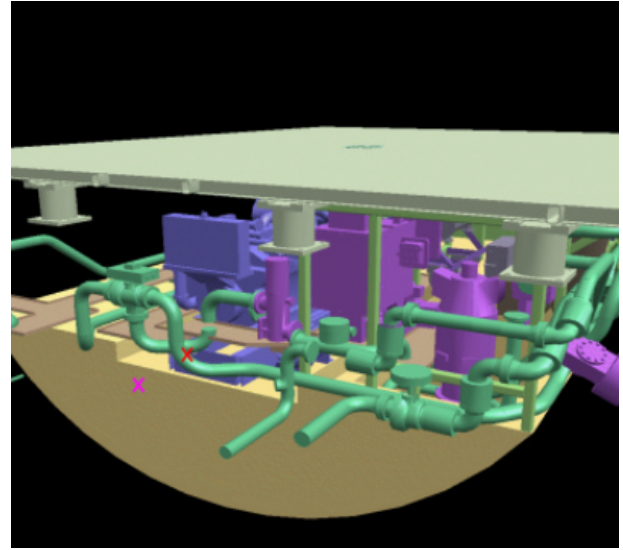
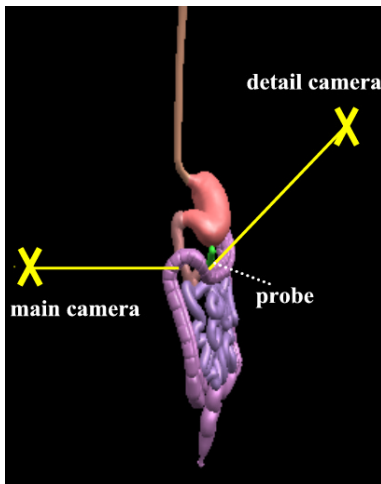


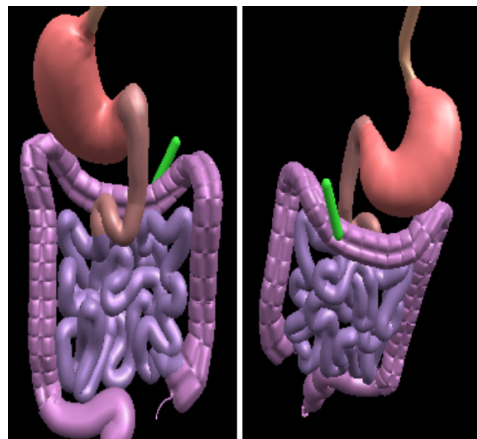
**Color Plate I.** View navigation during haptic exploration of the Auxiliary Machine Room (AMR). The haptic probe is marked with a red cross.



**Color Plate II.** A bird's eye view of AMR, showing both the viewpoint (marked with a magenta cross) and the haptic probe (marked with a red cross).



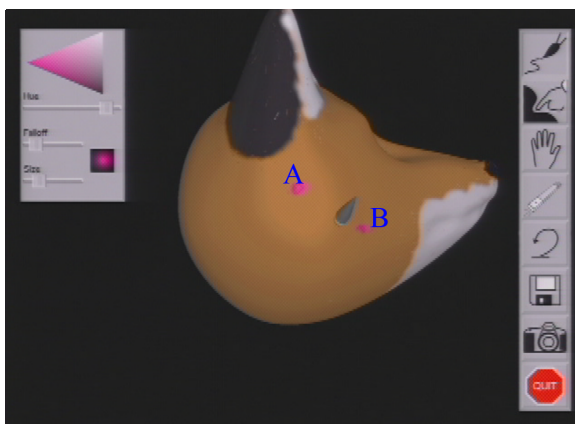
**Color Plate III.** Bird's eye view of the digestive tract, while exploring the transversal colon.



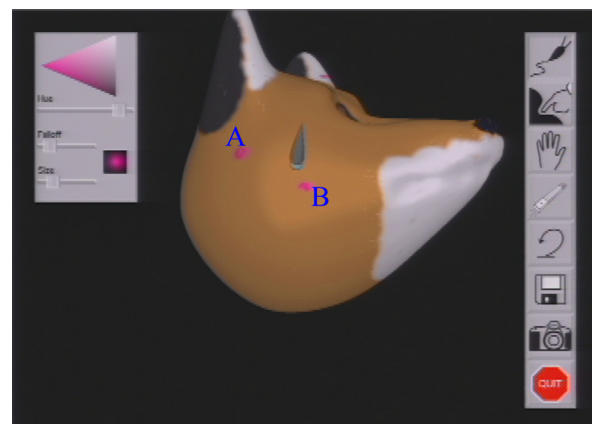
**Color Plate IV.** Main view (right) and detail view (left) of the digestive tract, while the probe exploring the colon. The snapshots are taken in the same situation shown in Color Plate III.



**Color Plate V.** Detail views of the haptic probe touching the same point of the duodenum with two different orientations.



**Color Plate VI.** Automatic repositioning according to point A.



**Color Plate VII.** Automatic repositioning according to point B.