

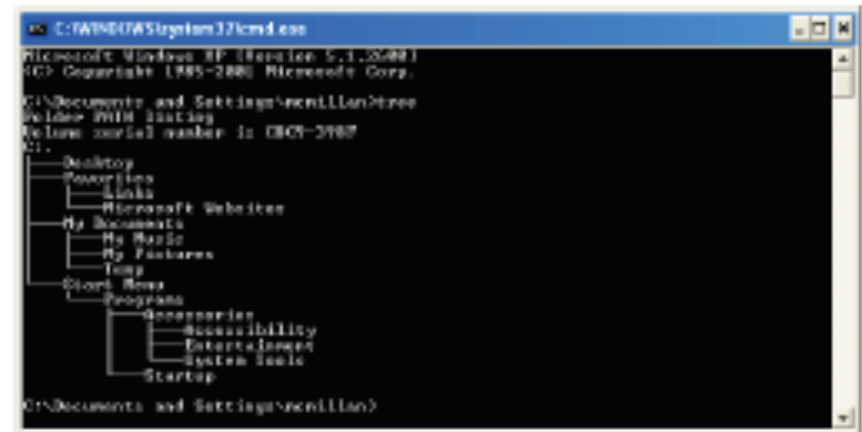
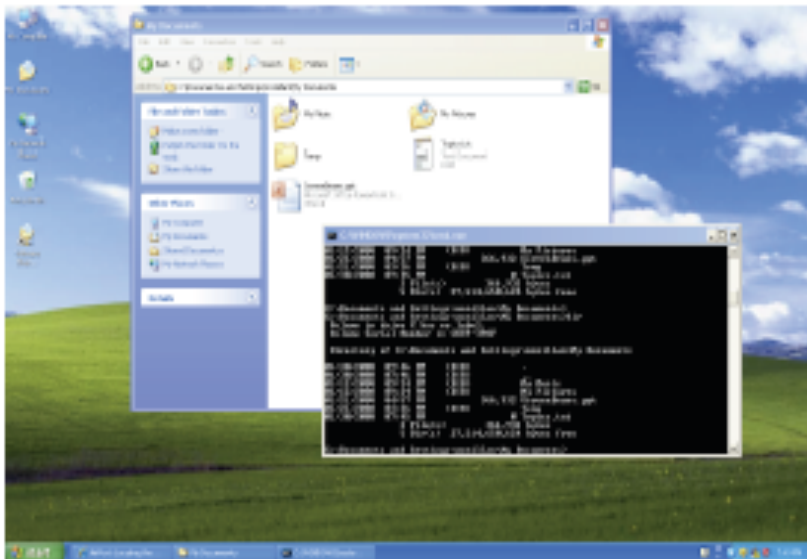
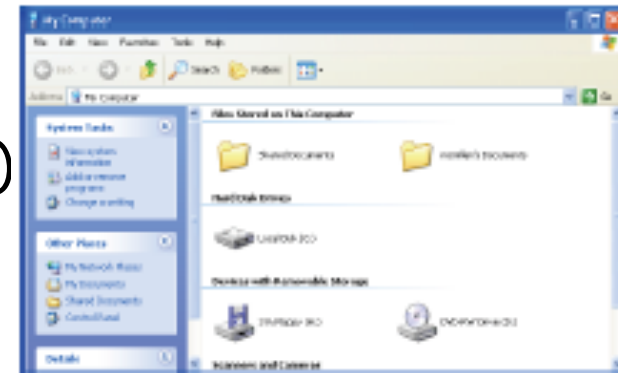
Getting to Know Your Computer



- Your File System
- Applications
- What's running on your machine
- Its own devices
- Networking

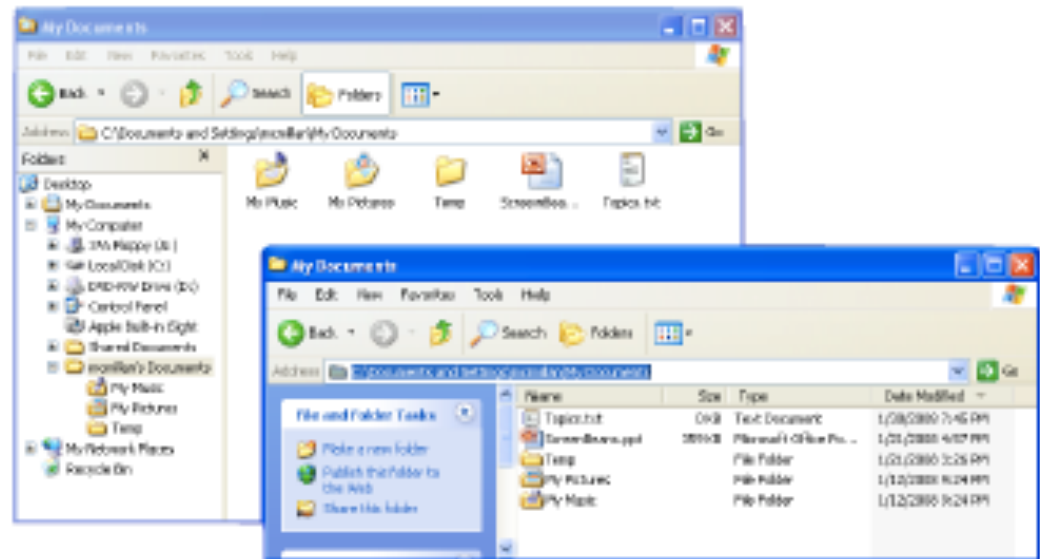
Your File System

- "My Computer"
- Directories & Folders
- Hierarchy
- File Explorer (Rather than Internet Explorer)



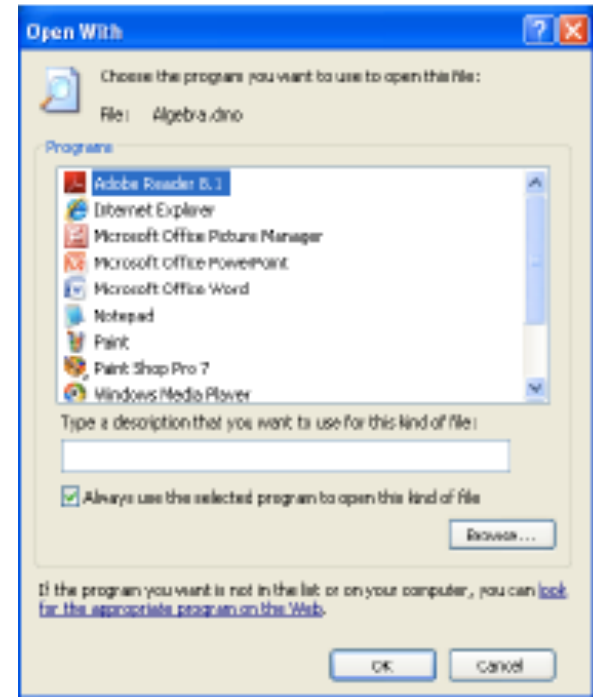
A File's Many Faces

- Files are collections of bits
- Vessels for data
- Icons are "symbolic" proxies for a file
- You can use a file's icon to reference it
- Information about a file (Right-click and choose "Properties")
- Changing files name and and its icon



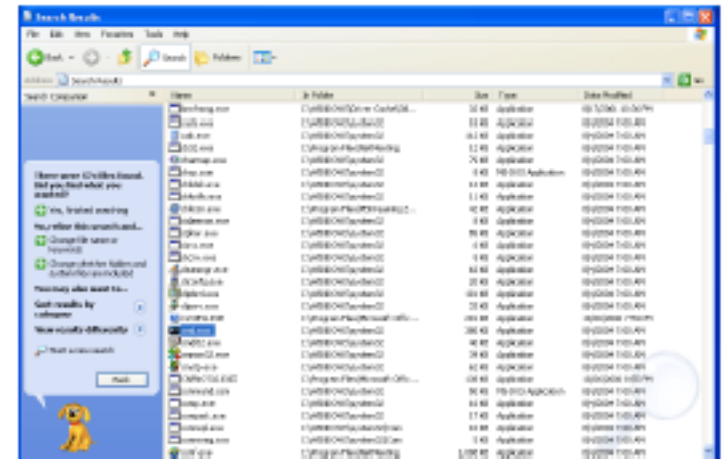
Apps "R" Files

- File Extensions - extensions are the part of a file's name following the last "period"
- You might need to make extensions visible on your computer by selecting "Tools | Folder Options | View"
- Special files with extensions ".exe, .com, or .bat" indicate executable programs
- Extensions of data files provide a hint of what application can open the selected file.



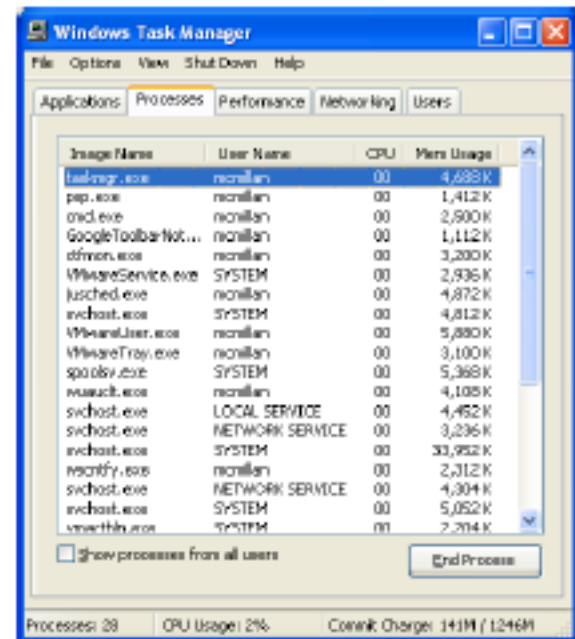
Finding Files

- Select "Search for Files or Folders" on the System Tasks
- Select "All files and folders"
- Search for all applications by entering "*.exe, *.com, *.bat" in the "All or part of file name:" text box.
- You should recognize most of these files
- Try double clicking on a file called "cmd.exe"



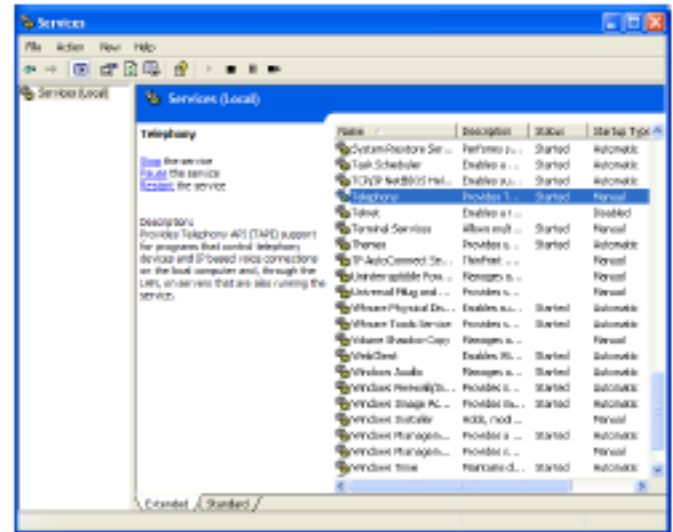
What's Running on Your Computer?

- Hit "Ctrl-Alt-Del" and select "Task Manager"
- Many of the programs running are system services started by the operating systems
- The ones that you started are available under the "Applications" tab
- Try sorting by CPU, and Mem Usage
- You can also explore the Performance and Networking tabs to see monitors of your machine's activities



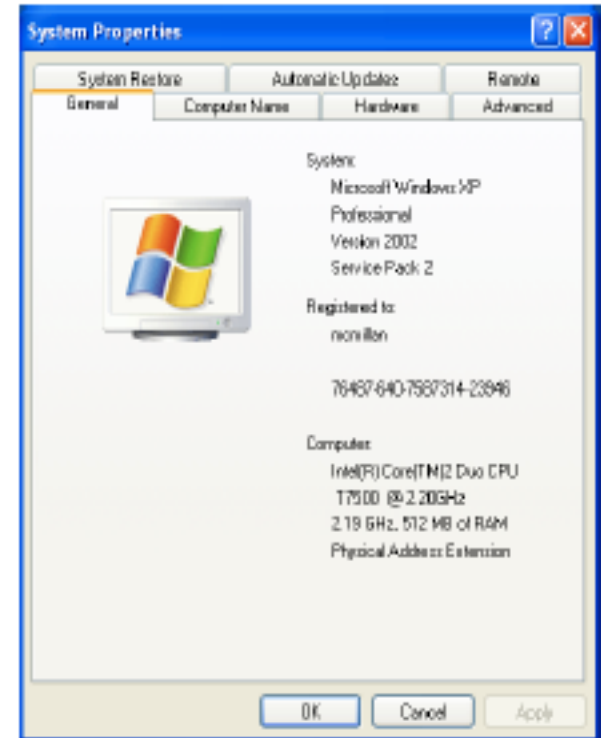
System Services

- Select "Administrative Tools" (Might be under "Performance and Maintenance")
- Now select "Services"
- This should bring up an application that controls which applications are automatically started by the OS upon booting up



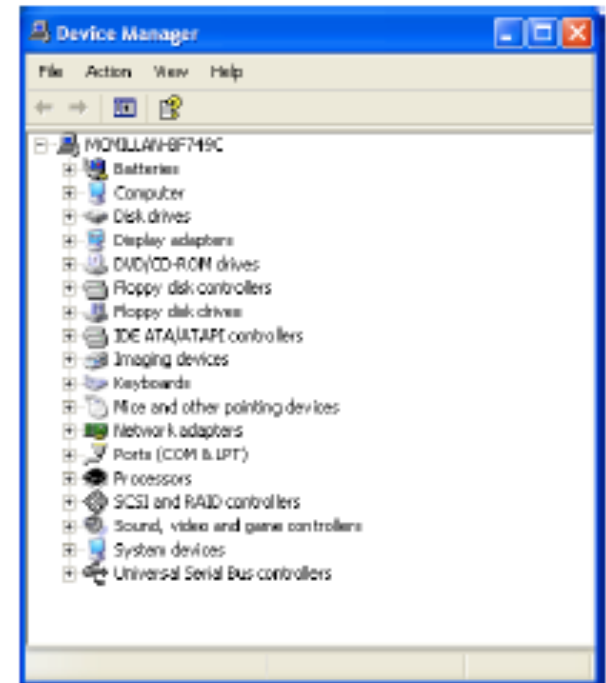
System Properties

- Return to the control panel and select "System"
- This panel provides technical details of your machine including:
 - CPU
 - Memory
 - System Name
- Select the "Hardware" tab and then push the "Device Manager" button



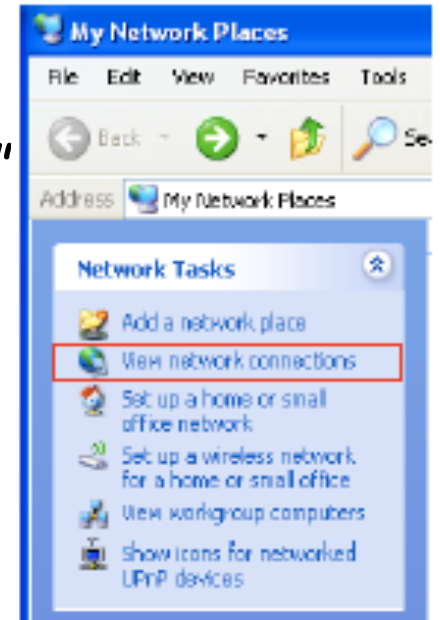
Device Manager

- The device manager allows you to explore the hardware features of your system.
- You can also check "driver" versions
- A driver is special software that enables other programs to access the hardware
- If a hardware device is not operating it will show up as a warning on this dialog
- Uninstalling H/W



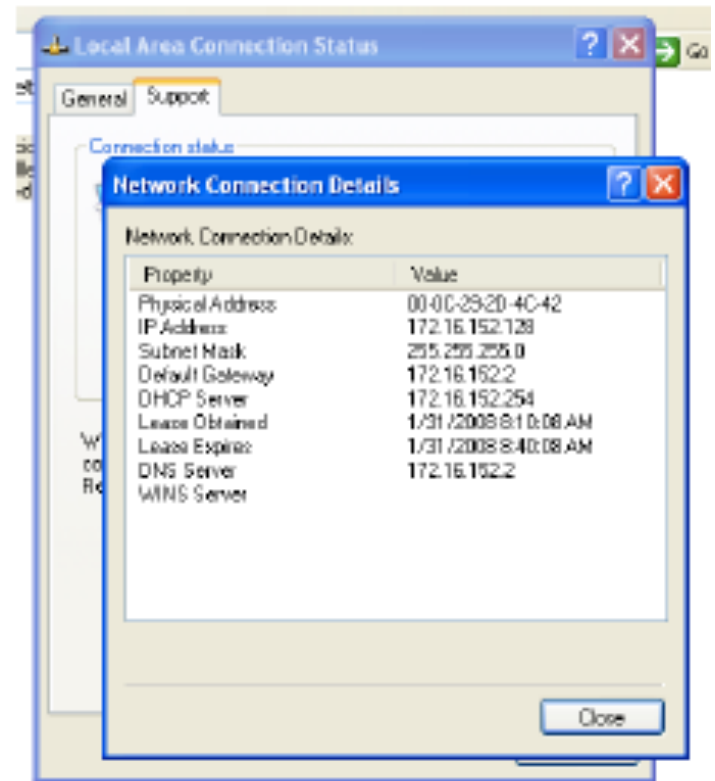
Network Places

- Extend your file system beyond your local hard drive
- Double-click on "View Network Connections"
- From the list of devices find your network interface (probably a wireless one)
- Right-click on it and select "Properties"
- Check the "Show icon in notification area when selected" box.
- You should now see a new icon in your "Task Tray"



Your Network Identity

- There are two important numbers that identify you to the network
- MAC Address: Identifies your H/W network interface. It's unique to your card.
 - "Right-click" the network icon on the task tray
 - Select "Status"
 - Select the "Support" tab
 - 12 hexadecimal digits
- IP Address: A number assigned to your machine by a network manager
 - 4 numbers between 0-255 (8-bit bytes)



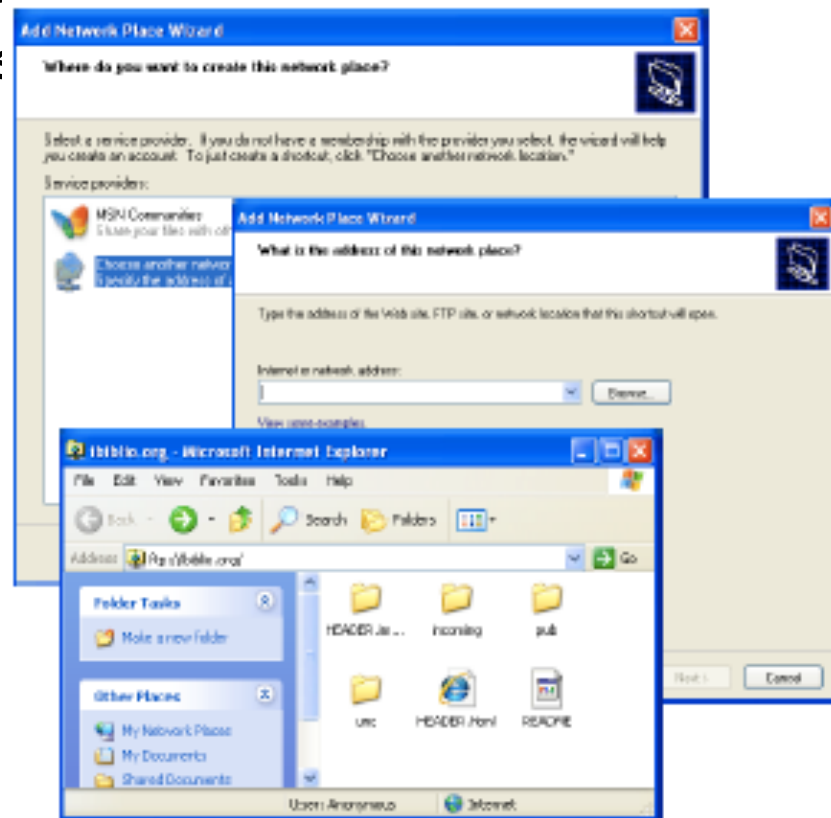
Extending your File Systems

- You can extend your file system to include files over the network as follows
- Double click on "My Network Place"
- Then choose "Add a network place"
- This should bring up a "wizard" dialog
- Select "Next"



An FTP connection

- FTP - (File Transfer Protocol) is one of the older and more simple ways of accessing remote files
- Double-click on "Choose another network location"
- Enter "ftp://ibibilo.org" for the "Internet or network address"
- Click "Next" on the next 2 dialogs (Make sure the anonymous is checked)



Summary

- One of the most important abstractions of a computer is its file system
- All data and programs are stored as files
- Computers provide tools for finding out what programs are running on them at any one time and what resources those programs are using (CPU, memory, etc.)
- The Network can be used to extend the file system to include remote data that is not local to your own computer.